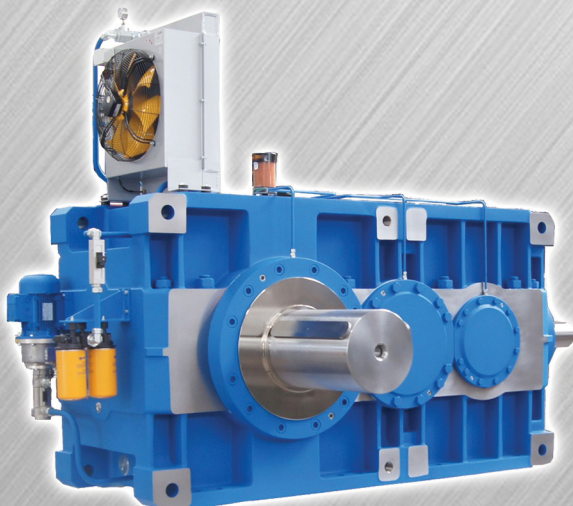
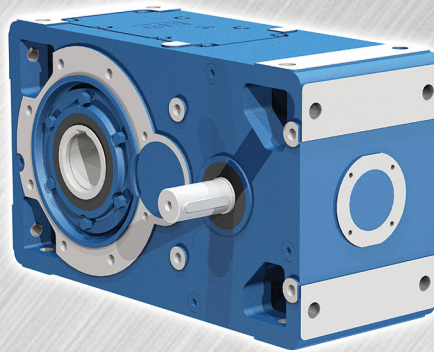
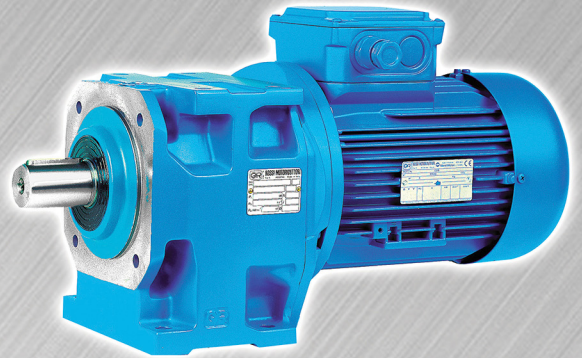
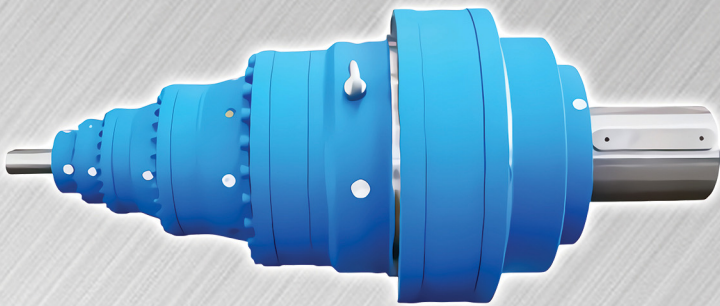




# Rossi

Habasit Group

## **GEAR BOX & GEAR MOTOR** FACTORY STANDARD UNIT & CUSTOMIZE UNIT



OFFICIAL DISTRIBUTOR & ASSEMBLING PLANT IN INDONESIA  
**PT PREMIER ENGINEERING INDONESIA**

Providing Global Capabilities With Local Solutions

ELECTRICAL CONTROL - POWER TRANSMISSION - HYDRAULIC SYSTEM

☎ : (+62) 85102393948

✉ : support@premier-engineering.co.id

📘 : PT Premier Engineering Indonesia

📷 : premier.engineering.indonesia

📺 : PT Premier Engineering Indonesia

🌐 : www.premier-engineering.co.id

# COMPANY HISTORY



- **1953** Rossi is established by Gilio Rossi.
- **70's** 1<sup>st</sup> company to adopt case-hardened, tempered, ground gear pairs.  
1<sup>st</sup> company to adopt complete modular system for gear reducers.
- **80's** Worm gear reducers and gearmotors with universal mounting, monobloc casing and ZI involute profile.
- **1991** Rossi launch 1<sup>st</sup> in the market universal mounting & single-piece casing for its helical gearbox range.
- **1992** Rossi is ISO9001 certified, 1<sup>st</sup> gearbox company in Italy and 2<sup>nd</sup> in Europe.
- **1997** Rossi acquires SEIMEC (electric motor manufacturer).
- **2000** Rossi installs JD Edwards ERP system and Sales Force Automation CRM.
- **2002** Rossi acquires SMEI (planetary gearbox manufacturer).
- **2004** Habasit acquires 51% of Rossi.
- **2009** Habasit acquires 100% of Rossi.
- **2010** The new Rossi logo substitutes the Rossi Gearmotors one.  
New corporate identity is rolled out.
- **2011** RossiForYou web portal is launched.
- **2012-2014** New subsidiaries South Africa, Turkey, Malaysia, Benelux and Poland.
- **2015** New subsidiary in Brazil.
- **2017** PT PREMIER ENGINEERING INDONESIA is Official Distributor in Indonesia.
- **2019** PT PREMIER ENGINEERING INDONESIA is Official Assembling Plant for Planetary Gear.

## OFFICIAL SUPPORTING LETTER FOR DISTRIBUTOR & ASSEMBLING PLANT



Date: 02/03/2017  
From: Leonard Tan  
To: PT. Premier Engineering Indonesia  
Att: Mr. Samsudin Zhang  
Page: 1 of 3

**Rossi Gearmotors South East Asia Sdn Bhd**  
Company registration number 1048227-K  
No 50, Jalan Kapar 27/89,  
Hicom Heavy Industrial Park,  
Sekayen 27, Taman Alam Megah,  
MY - 40400 Shah Alam, Selangor  
Tel. +603 5614 3833  
Fax +603 5614 0833  
info.malaysia@rossi-group.com  
www.rossi-group.com/malaysia

**Ref:** Supporting letter to PT. Premier Engineering Indonesia.

Dear Madam,  
Rossi Group is a subsidiary of Habasit Group, headquarter based in Modena, Italy and has 5 manufacturing facilities all based in Italy. Rossi Group is also boosted with the widest range of products with 18 product catalogues to suit different needs.

Rossi Group has setup Rossi Gearmotors S.E.A. Sdn Bhd, headquarter based in Shah Alam, Malaysia, and will be the engineering, sales and support center for the South East Asia market. Rossi's main products are gear reducer and gearmotors, including bevel helical, helical, planetary, worm, in-line and shaft mounted. Rossi has introduced new range of bevel helical gear reducer up to 1,700 kNm weights 40,000 kg and planetary gear up to 3,000 kNm, weights 9,500 kg. Please find the attached flyer for more details.

The main market focuses for Rossi Gearmotors S.E.A. Sdn. Bhd. will be in Indonesia. We are aware that PT. Premier Engineering Indonesia is specialized in power transmission products with strong engineering support, Rossi Gearmotors S.E.A. sees PT. Premier Engineering Indonesia as a strategic partner to expand the market in Indonesia. We would like to confirm to you that Rossi will provide full support to PT. Premier Engineering Indonesia and we believed that our partnership will flourish and open up more opportunity for mutual benefit.

Thank you for your time and cooperation on the matter. Should you need further information, please do not hesitate to contact us.

Regards,

LEONARD TAN  
Business Development Director  
Rossi Gearmotors S.E.A. Sdn. Bhd.



Date: 04 November 2019  
From: EH Lim  
To: PT. Premier Engineering Indonesia  
Att: Mr. Samsudin Zhang

**Ref:** Appointment letter of PT Premier Engineering Indonesia as Rossi SEA Distributor

Dear Sir,

Rossi Group is a subsidiary of Habasit Group, headquarter based in Modena, Italy and has 5 manufacturing facilities all based in Italy. Rossi Group is also boosted with the widest range of products with 18 product catalogues to suit different needs.

Rossi Group has setup Rossi Gearmotors S.E.A. Sdn Bhd, headquarter based in Shah Alam, Malaysia, and will be the engineering, sales and support center for the South East Asia market. Rossi's main products are gear reducer and gearmotors, including bevel helical, helical, planetary, worm, in-line, and shaft mounted. Rossi has introduced new range of bevel helical gear reducer up to 1,7 million Nm weights 40,000kg and planetary gear up to 3 million Nm, weight 9,500kg.

The main market focuses for Rossi Gearmotors S.E.A. Sdn Bhd will be in Indonesia. We are aware that PT. Premier Engineering Indonesia is specialized in power transmission products with strong engineering support, Rossi Gearmotors S.E.A sees PT. Premier Engineering Indonesia as a strategic partner to expand the market in Indonesia. We are pleased to appoint your company, PT Premier Engineering Indonesia as Distributor and assemble Rossi EP Planetary in Indonesia. We believed that our partnership will flourish and open up more opportunity for mutual benefit.

We look forward to a long and prosperous future together.

Best regards,

Lim Eng How  
Managing Director  
Rossi Gearmotors S.E.A. Sdn Bhd

**Rossi Gearmotors South East Asia Sdn Bhd**  
Company registration number 1048227-K  
No 50, Jalan Kapar 27/89,  
Hicom Heavy Industrial Park,  
Sekayen 27, Taman Alam Megah,  
MY - 40400 Shah Alam, Selangor  
Tel. +603 5614 3833  
Fax +603 5614 0833  
info.malaysia@rossi.com  
www.rossi.com/malaysia

# PRODUCT RANGE



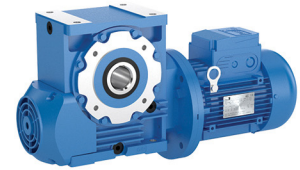
**PLANETARY GEARMOTORS (IN LINE AND BEVEL)**  
EP SERIES

Size	20 size (001 ... 710)
Power	$P_1$ 0.18 ... 90 kW
Nominal torque	$T_{N2}$ 1600 ... 710,000 N m
Transmission ratio	$i_N$ 3.55 ... 3,550 (in line) 9 ... 2,240 (bevel)



**CUSTOMIZE UNITS - SPECIAL PROJECT**

Power	according to specifications
Nominal torque	$T_{N2}$ $\leq$ 710,000 Nm
Transmission ratio	$i$ according to specifications



**PLANETARY GEARMOTORS (IN LINE AND BEVEL)**  
A SERIES

Size	16 sizes (32 ... 180)
Power	$P_1$ 0.09 ... 55 kW
Nominal torque	$T_{N2}$ $\leq$ 19000 N m
Transmission ratio	$i_N$ 7 ... 16,000



**SLEWING DRIVES**  
EPS SERIES

Size	13 size (100 ... 10,000)
Nominal torque	$T_{N2}$ 1,500 ... 125,000 N m
Transmission ratio	$i_N$ 50 ... 1,000



**COAXIAL GEAR REDUCERS AND GEARMOTORS**  
E SERIES

Size	16 sizes (32 ... 180)
Power	$P_1$ 0.09 ... 75 kW
Nominal torque	$T_{N2}$ $\leq$ 10,000 Nm
Transmission ratio	$i_N$ 4 ... 6,300

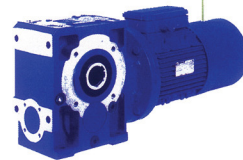


<b>WORM GEARMOTORS STANDARD FIT</b> AS SERIES	Size: 6 sizes (118 ... 742)	Power: $P_1$ 0.09 ... 5.5 kW	Nominal torque: $T_{N2}$ $\leq$ 670 N m	Transmission ratio: $i_N$ 6 ... 75
<b>COAXIAL GEARMOTORS</b> ES SERIES	Size: 8 sizes (0 ... 7)	Power: 0.09 ... 11 kW	Nominal torque: $\leq$ 900 N m	Transmission ratio: 4 ... 200



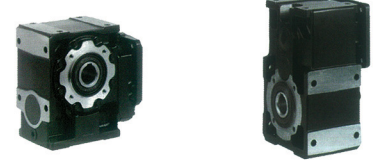
**COMBINED UNITS**  
EP COMBINED UNITS

Size	6 size (125 ... 710)
Nominal torque	$T_{N2}$ 710,000 N m
Transmission ratio	$i_N$ according to specifications



**BEVEL-HELICAL GEAR REDUCERS AND GEARMOTORS**  
G SERIES

Size	18 sizes (40 ... 360)
Power	$P_1$ 0.09 ... 160 kW
Nominal torque	$T_{N2}$ $\leq$ 10,000 Nm
Transmission ratio	$i_N$ 2 ... 160



<b>WORM SERVO GEAR REDUCERS</b> SR SERIES	Size: 7 sizes (32 ... 81)	Accelerating torque: $T_{A2}$ 31.5 ... 747 N m	Transmission ratio: $i$ 7 ... 239
<b>HELICAL SERVO GEAR REDUCERS</b> SR SERIES	Size: 8 sizes (0 ... 7)	Accelerating torque: 64 ... 3,000 N m	Transmission ratio: 6.41 ... 110



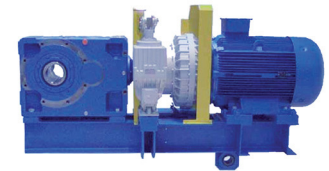
**HEAVY INDUSTRY PRODUCTS**  
EP SERIES

Size	10 size (125 ... 3000)
Nominal torque	from 125,000 to 3,000,000 N m
Transmission ratio	$i_N$ 16 ... 1,800



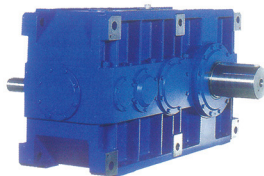
**HELICAL GEAR REDUCERS AND GEARMOTORS**  
G SERIES

Size	18 sizes (40 ... 360)
Power	$P_1$ 0.09 ... 160 kW
Nominal torque	$T_{N2}$ $\leq$ 87,500 Nm
Transmission ratio	$i_N$ 2 ... 160



**DRIVE UNITS ON SWING BASE**  
RE SERIES

Gear reducer size	140 ... 712
Motor size	132 ... 400
Nominal torque	$T_{N2}$ $\leq$ 630,000 N m



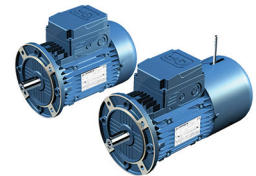
**HELICAL AND BEVEL HELICAL GEAR UNITS**  
H SERIES

Size	10 sizes (400 ... 631)
Power	$P_{N2}$ 16 ... 3,650 kW
Nominal torque	$\leq$ 400,000 N m
Transmission ratio	$i_N$ 8 ... 315



**HELICAL AND BEVEL-HELICAL GEAR REDUCERS**  
G SERIES

Size	18 sizes (40 ... 360)
Power	$P_1$ 0.09 ... 160 kW
Nominal torque	$T_{N2}$ $\leq$ 87,500 Nm
Transmission ratio	$i_N$ 2 ... 160



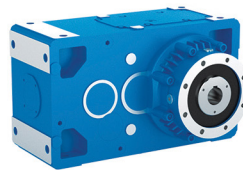
**PREMIUM LINE MOTORS - HIGH EFFICIENCY ASYNCHRONOUS THREE-PHASE MOTORS (ErP, EISA, MEPS)**  
TX SERIES

Size	10 sizes (400 ... 631)
Power	$P_N$ 0.06 ... 90 kW
Polarity	2, 4, 6, 8 poles



**HEAVY INDUSTRY PRODUCTS**  
H SERIES

Size	11 size (400 ... 712)
Nominal torque	$T_{N2}$ 87.5 ... 630,000 N m
Transmission ratio	$i_N$ 8 ... 315



**HELICAL AND BEVEL-HELICAL GEAR REDUCERS FOR EXTRUDERS**  
GX SERIES

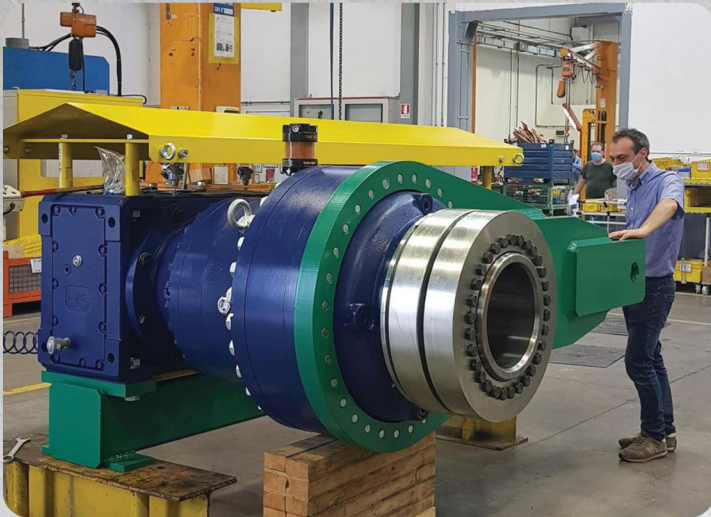
Size	16 sizes (100 ... 451)
Power	$P_{N2}$ $\leq$ 1,710 kW
Nominal torque	$T_{N2}$ $\leq$ 132,200 Nm
Transmission ratio	$i_N$ 6.3 ... 28



**HEAVY DUTY ROLLER TABLE MOTORS**  
S SERIES

Size	112 ... 250
Nominal torque	$T_k$ $\leq$ 1,700 kW
Transmission ratio	4, 6 Poles

# SIZE OF GEAR REDUCERS



## **PT PREMIER ENGINEERING INDONESIA (VICTORINDO GROUP)**

Main Office : Jl. Pulau Bunaken No. A3 - Kawasan Industri Medan III - Medan 20242 - North Sumatera - Indonesia

Phone : +6261 88809911 +62 851 0239 3948 - Fax : +6261 88809996

Branch Office : Jl. Daan Mogot Km. 21 Komplek Pergudangan Era Prima  
Blok D-5 Batu Ceper - Tangerang 15122 - Jawa Barat

E-mail : [support@premier-engineering.co.id](mailto:support@premier-engineering.co.id) - Website : [www.premier-engineering.co.id](http://www.premier-engineering.co.id)